



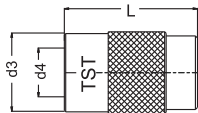
COUPLINGS, MULTICOUPLINGS & MOULD COOLING PRODUCTS

SERIE 6,9,16 ■

KUPPLUNGEN, MULTIKUPPLUNGEN & KÜHLUNGSELEMENTE FÜR WERKZEUGE

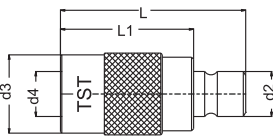


Blind Socket / Blindkupplung



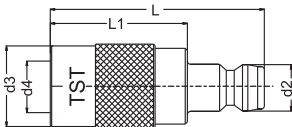
With Valve / Mit Ventil Order No / Bestellnr.	Serie	d3	d4	L
6 KTG 00	200	17	9	27
9 KTG 00	300	23	13	35

Adapting Socket with Plug
Adapterkupplung mit Nippel



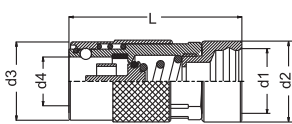
With Valve / Mit Ventil Order No / Bestellnr.	Without Valve / Ohne Ventil Order No / Bestellnr.	Serie	d2	d3	d4	L	LI
HVK 6 AU 09	HK 6 AU 09	200	9	17	9	43	27.5
HVK 9 AU 06	HK 9 AU 06	300	13	23	13	51	36

Adapting Socket with 060 - 090 Plugs
Adapterkupplung mit 060 - 090 Nippel



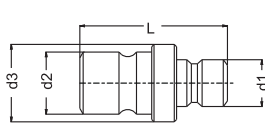
With Valve / Mit Ventil Order No / Bestellnr.	Without Valve / Ohne Ventil Order No / Bestellnr.	Serie	d2	d3	d4	L	LI
HVK 6 AU 090	HK 6 AU 090	200	13	17	9	41.5	27.5
HVK 9 AU 060	HK 9 AU 060	300	9	23	13	50	36

Adapting Socket with 100.08 Plug
Adapterkupplung mit 100.08 Nippel



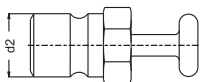
With Valve / Mit Ventil Order No / Bestellnr.	Without Valve / Ohne Ventil Order No / Bestellnr.	Serie	d2	d3	d4	L	LI
HVK 6 AU 100.08	HK 6 AU 100.08	200	17	21	17	9	46.5
HVK 9 AU 100.08	HK 9 AU 100.08	300	17	21	23	13	52

Adapting Plug / Adapterternippel



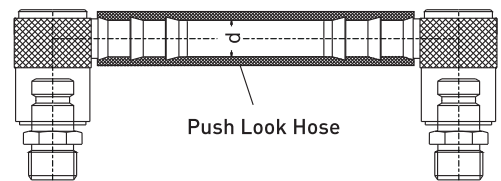
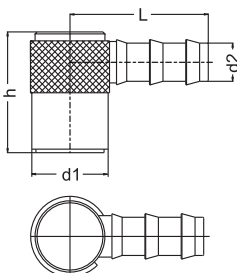
Order No / Bestellnr.	d1	d2	d3	L
9 HEF 06	9	13	15	32

Stop Plugs / Blindnippel



Order No / Bestellnr.	Serie	d2
6 KTU 00	200 (1/4")	9
9 KTU 00	300 (3/8")	13
16 KTU 00	500 (1/2")	20

Flexible Diverting connector / Umlenkupplung mit Schnellsteck- Schlauchtülle



Order No Bestellnr.	Serie	Ød Hose Inner dia.	h		L		d1		d2	
			mm	inch.	mm	inch.	mm	inch.	mm	inch.
HK 6 KG 10	200	10 - 3/8"	25.4	1.00	31.8	1.25	17	0.67	9.7	0.375
HK 9 KG 13	300	13 - 1/2"	36.3	1.43	39.6	1.56	23	0.90	12.7	0.500

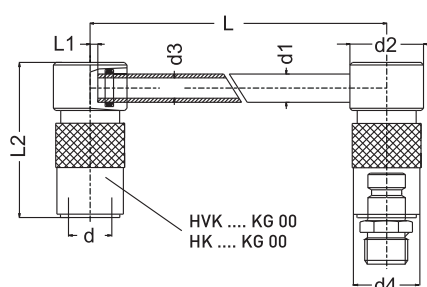
COUPLINGS, MULTICOUPLINGS & MOULD COOLING PRODUCTS

KUPPLUNGEN, MULTIKUPPLUNGEN & KÜHLUNGSELEMENTE FÜR WERKZEUGE

SERIE 6,9,16



Diverting connector / Umlenkkupplung



"Not released for sale in Germany"
"Verkauf in Deutschland ausgeschlossen"

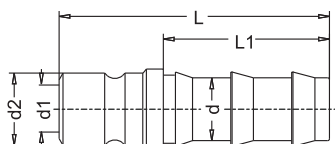


With Valve / Mit Ventil
Order No / Bestellnr.

Without Valve / Ohne Ventil
Order No / Bestellnr.

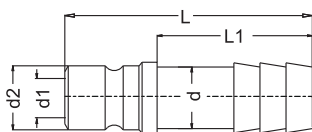
Order No / Bestellnr.	Order No / Bestellnr.	Serie	d	d1	d2	d3	d4	LI	L2	L
HVK 6 - KG 125	HK 6 - KG 125	200	9	8	20	6	17	0	27	125
HVK 6 - KG 250	HK 6 - KG 250	200	9	8	20	6	17	0	27	250
HVK 6 - KG 500	HK 6 - KG 500	200	9	8	20	6	17	0	27	500
HVK 9 - KG 125	HK 9 - KG 125	300	13	10	26	8	22	2	41	125
HVK 9 - KG 250	HK 9 - KG 250	300	13	10	26	8	22	2	41	250
HVK 9 - KG 500	HK 9 - KG 500	300	13	10	26	8	22	2	41	500
HVK 16 - KG 160	HK 16 - KG 160	500	20	14	36	12	31	2	55	160
HVK 16 - KG 315	HK 16 - KG 315	500	20	14	36	12	31	2	55	315
HVK 16 - KG 500	HK 16 - KG 500	500	20	14	36	12	31	2	55	500

**Push-Lock Hose Plug
Stecknippel mit
Schnellsteck - Schlauchtülle**



Order No Bestellnr.	Serie	d / I.D		d1	d2	LI		L	
		mm	inch.			mm	inch.	mm	inch.
6 FU 10	200	10	3/8"	6	9	24	0.95	37	1.4
6 FU 13	200	13	1/2"	6	9	24	1.10	39.5	1.56
9 FU 10	300	10	3/8"	9	13	24	0.95	45	1.75
9 FU 13	300	13	1/2"	9	13	28	1.10	48	1.86
16 FU 13	500	13	1/2"	15	20	28	1.10	50.8	2.00
16 FU 19	500	19	3/4"	15	20	28	1.50	63.5	2.50

**Standard Hose plug
Standard Schlauchtülle**



Order No / Bestellnr.	Serie	d	d1	d2	L	LI
6 HU 06	200	6 - 1/4"	6	9	37	23
6 HU 08	200	8 - 5/16"	6	9	37	23
6 HU 09	200	9 - 5/14"	6	9	37	23
6 HU 10	200	10 - 3/8"	6	9	37	23
9 HU 09	300	9 - 5/14"	9	13	45	26
9 HU 10	300	10 - 3/8"	9	13	45	26
9 HU 11	300	11 - 7/16"	9	13	45	26
9 HU 13	300	13 - 1/2"	9	13	44.5	26
16 HU 13	500	13 - 1/2"	15	20	50	27
16 HU 20	500	20 - 3/4"	15	20	50	27



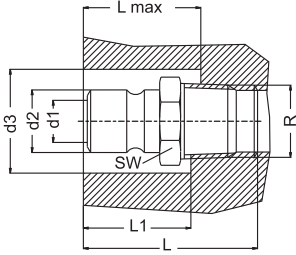
COUPLINGS, MULTICOUPLINGS & MOULD COOLING PRODUCTS

SERIE 6,9,16 ■

KUPPLUNGEN, MULTIKUPPLUNGEN & KÜHLUNGSELEMENTE FÜR WERKZEUGE

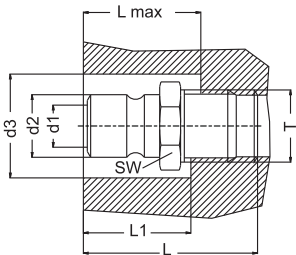


Plug with conical male thread
Nippel mit konischem Aussengewinde



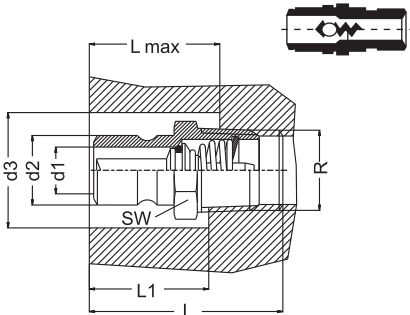
Order No / Bestellnr.		Serie	R	dl	d2	d3	SW	LI	L max	L
BSPT	NPT									
6 RU 10	6 TU 10	200	1/8"	6	9	22	13	17	18	24
6 RU 13	6 TU 13	200	1/4"	6	9	26	16	19	20	29
6 RU 17	6 TU 17	200	3/8"	6	9	30	19	21	22	30
9 RU 10	9 TU 10	300	1/8"	9	13	26	14	25	26	30
9 RU 13	9 TU 13	300	1/4"	9	13	26	16	25	26	33
9 RU 17	9 TU 17	300	3/8"	9	13	30	19	26	28	34
9 RU 21	9 TU 21	300	1/2"	9	13	37	22	26	28	39
16 RU 13	16 TU 13	500	1/4"	15	20	30	21	28	32	41
16 RU 17	16 TU 17	500	3/8"	15	20	32	21	28	32	35
16 RU 21	16 TU 21	500	1/2"	15	20	32	22	37	38	44
16 RU 26	16 TU 26	500	3/4"	15	20	38	29	38	40	45

Plug with cylindrical male thread
Nippel mit zylindrisches Außengewinde



Order No / Bestellnr.	Serie	T	dl	d2	d3	SW	LI	L max	L
9 EU 13	300	BSP 1/4"	9	13	30	16	20	22	34
9 EU 17	300	BSP 3/8"	9	13	30	19	20	22	34
16 EU 17	500	BSP 3/8"	15	20	32	22	25	25	40
16 EU 21	500	BSP 1/2"	15	20	32	22	25	25	45
6 EUM 10	200	M10X1	6	9	22	11	17	18	24
6 EUM 14	200	M14X1.5	6	9	26	14	19	20	25
9 EUM 10	300	M10X1	9	13	26	14	25	26	30
9 EUM 14	300	M14X1.5	9	13	26	14	25	26	30

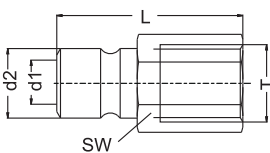
Shut-off Male threaded plug
Verschlussnippel mit Außengewinde



Order No / Bestellnr.		Serie	R	dl	d2	d3	SW	LI	L max	L
BSPT	NPT									
6 RUB 13	6 TUB 13	200	1/4"	6	9	28	14	19	21	29
6 RUB 17	6 TUB 17	200	3/8"	6	9	30	17	21	21	29
9 RUB 13	9 TUB 13	300	1/4"	9	13	28	14	25	21	33
9 RUB 17	9 TUB 17	300	3/8"	9	13	30	17	26	21	33
9 RUB 21	9 TUB 21	300	1/2"	9	13	32	22	26	28	37
16 RUB 21	16 TUB 21	500	1/2"	15	20	32	22	28	28	50
16 RUB 26	16 TUB 26	500	3/4"	15	20	38	27	32	32	50

Order No / Bestellnr.	Serie	R	dl	d2	d3	SW	LI	L max	L
6 EUBM 14	200	M14x1.5	6	9	28	14	21	21	29
9 EUBM 14	300	M14x1.5	9	13	28	14	25	21	34

Plug with female thread
Nippel mit Innengewinde



Order No / Bestellnr.		Serie	T	dl	d2	L	SW
BSPT	NPT						
6 DU 10	6 NU 10	200	1/8"	6	9	26	13
6 DU 13	6 NU 13	200	1/4"	6	9	32	16
6 DU 17	6 NU 17	200	3/8"	6	9	32	19
9 DU 10	9 NU 10	300	1/8"	9	13	29	14
9 DU 13	9 NU 13	300	1/4"	9	13	37	16
9 DU 17	9 NU 17	300	3/8"	9	13	39	19
9 DU 21	9 NU 21	300	1/2"	9	13	40	24
16 DU 17	16 NU 17	500	3/8"	15	20	32	21
16 DU 21	16 NU 21	500	1/2"	15	20	35	24

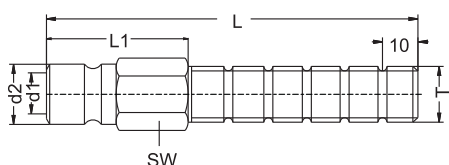
COUPLINGS, MULTICOUPLINGS & MOULD COOLING PRODUCTS

KUPPLUNGEN, MULTIKUPPLUNGEN & KÜHLUNGSELEMENTE FÜR WERKZEUGE

■ SERIE 6,9,16

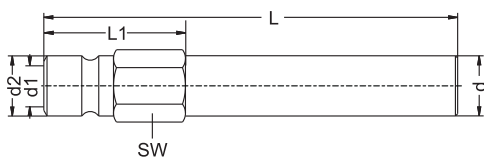


Long Threaded Plugs / Gewindestecker



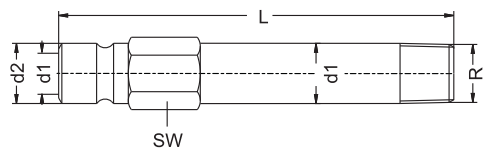
Order No / Bestellnr.	Serie	T	d1	d2	SW	LI	L
6 BLM 10x100	200	M10x1	6	9.4	11	40	100
6 BL 10x100	200	BSP 1/8"	6	9.4	11	40	100
6 BL 13x100	200	BSP 1/4"	6	9.4	14	40	100
6 BLM 14x100	200	M14x1.5	6	9.4	14	40	100
6 BL 17x100	200	BSP 3/8"	6	9.4	17	40	100
9 BLM 10x100	300	M10x1	9	13.5	14	40	100
9 BL 10x100	300	BSP 1/8"	9	13.5	14	40	100
9 BL 13x100	300	BSP 1/4"	9	13.5	14	40	100
9 BLM 14x100	300	M14x1.5	9	13.5	14	40	100
9 BLM 16x100	300	M16x1.5	9	13.5	17	40	100
9 BL 17x100	300	BSP 3/8"	9	13.5	17	40	100

Extension plug without thread / Verlängerungsniessel ohne Gewinde



Order No / Bestellnr.	Serie	d	d1	d2	SW	L	LI
6 BN 63	200	10	6	9.4	11	63	17
6 BN 100	200	10	6	9.4	11	100	17
6 BN 120	200	10	6	9.4	11	120	17
6 BN 240	200	10	6	9.4	11	240	17
6 BN 360	200	10	6	9.4	11	360	17
9 BN 150	300	14	9	13	15	150	23
9 BN 300	300	14	9	13	15	300	23
9 BN 450	300	14	9	13	15	450	23
16 BN 500	500	21	15	20	22	500	30
16 BN 800	500	21	15	20	22	800	30

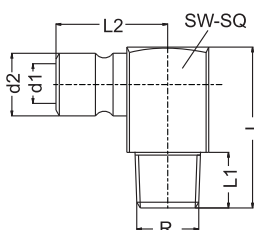
Extension plug / Verlängerungsniessel



Order No / Bestellnr.		Serie	R	SW	d1	d2	d3	L50	L100	L150	L200	L250
BSPT	NPT											
6 RU 10xL	6 TU 10xL	200	1/8"	11	6	9	10	50	100	150	200	250
6 RU 13xL	6 TU 13xL	200	1/4"	14	6	9	14	50	100	150	200	250
6 RU 17xL	6 TU 17xL	200	3/8"	17	6	9	17	50	100	150	200	250
9 RU 13xL	9 TU 13xL	300	1/4"	15	9	13	14	50	100	150	200	250
9 RU 17xL	9 TU 17xL	300	3/8"	17	9	13	17	50	100	150	200	250

Order No / Bestellnr.	Serie	R	SW	d1	d2	d3	L50	L100	L150	L200	L250
6 EUBM 10xL	200	M10x1	11	10	9	6	50	100	150	200	250
6 EUBM 14xL	200	M14x1.5	15	14	9	6	50	100	150	200	250
9 EUBM 14xL	300	M14x1.5	15	14	13	9	50	100	150	200	250

Angle plug with 90° / Winkelniessel mit 90°



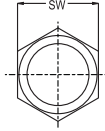
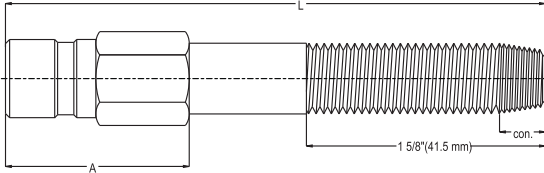
Order No / Bestellnr.	Serie	R	d1	d2	L	LI	L2	SW/SQ
6 RU 10 - 90	200	BSPT 1/8"	6	9	27	9	23	11
6 EUM 10 - 90	200	M10x1	6	9	27	9	23	11
6 RU 13 - 90	200	BSPT 1/4"	6	9	34	12	24	15
6 EUM 14 - 90	200	M14x1.5	6	9	34	12	24	15
6 RU 17 - 90	200	BSPT 3/8"	6	9	34	12	24	17
9 RU 13 - 90	300	BSPT 1/4"	9	13	34	12	24	15
9 RU 17 - 90	300	BSPT 3/8"	9	13	34	12	24	17



SERIE 6,9,16 ■

COUPLINGS, MULTICOUPLINGS & MOULD COOLING PRODUCTS

KUPPLUNGEN, MULTIKUPPLUNGEN & KÜHLUNGSELEMENTE FÜR WERKZEUGE



Extension Plugs with tapered and long parallel thread
Verlängerungsrippel mit Aussengewinde konisch

The largest complete thread on the standard NPT or BSPT taper is continued along the extension plug for the 1 5/8" (41.5 mm) shown below easy adjustments if needed. Die erste Gewindestufe der konisch ausgeführten Nippel ermöglicht einen sehr flexiblen Einsatzbereich

Serie & Thread
300 1/8"

Order No / Bestellnr.		A		L	
NPT	BSPT	mm	inch.	mm	inch.
9 NL 10x63	9 RL 10x63	22.2	7/8"	63.5	2.5"
9 NL 10x101	9 RL 10x101	25.4	1"	101.6	4"
9 NL 10x140	9 RL 10x140	25.4	1"	140	5.5"
9 NL 10x178	9 RL 10x178	25.4	1"	178	7"
9 NL 10x216	9 RL 10x216	25.4	1"	216	8.5"
9 NL 10x254	9 RL 10x254	25.4	1"	254	10"
9 NL 10x292	9 RL 10x292	25.4	1"	292	11.5"
9 NL 10x330	9 RL 10x330	25.4	1"	330	13"

Order No / Bestellnr.		A		L	
NPT	BSPT	mm	inch.	mm	inch.
6 NL 10x63	6 RL 10x63	22.2	11/16"	63.5	2.5"
6 NL 10x101	6 RL 10x101	25.4	1"	101.6	4"
6 NL 10x140	6 RL 10x140	25.4	1"	140	5.5"
6 NL 10x178	6 RL 10x178	25.4	1"	178	7"
6 NL 10x216	6 RL 10x216	25.4	1"	216	8.5"
6 NL 10x254	6 RL 10x254	25.4	1"	254	10"
6 NL 10x292	6 RL 10x292	25.4	1"	292	11.5"
6 NL 10x330	6 RL 10x330	25.4	1"	330	13"

200 1/8"

Order No / Bestellnr.		A		L	
NPT	BSPT	mm	inch.	mm	inch.
9 NL 13x63	9 RL 13x63	22.2	7/8"	63.5	2.5"
9 NL 13x101	9 RL 13x101	31.7	1.25"	101.6	4"
9 NL 13x140	9 RL 13x140	31.7	1.25"	140	5.5"
9 NL 13x178	9 RL 13x178	31.7	1.25"	178	7"
9 NL 13x216	9 RL 13x216	31.7	1.25"	216	8.5"
9 NL 13x254	9 RL 13x254	31.7	1.25"	254	10"
9 NL 13x292	9 RL 13x292	31.7	1.25"	292	11.5"
9 NL 13x330	9 RL 13x330	31.7	1.25"	330	13"

300 1/4"

Order No / Bestellnr.		A		L	
NPT	BSPT	mm	inch.	mm	inch.
6 NL 13x63	6 RL 13x63	22.2	7/8"	63.5	2.5"
6 NL 13x101	6 RL 13x101	31.7	1.25"	101.6	4"
6 NL 13x140	6 RL 13x140	31.7	1.25"	140	5.5"
6 NL 13x178	6 RL 13x178	31.7	1.25"	178	7"
6 NL 13x216	6 RL 13x216	31.7	1.25"	216	8.5"
6 NL 13x254	6 RL 13x254	31.7	1.25"	254	10"
6 NL 13x292	6 RL 13x292	31.7	1.25"	292	11.5"
6 NL 13x330	6 RL 13x330	31.7	1.25"	330	13"

200 1/4"

Order No / Bestellnr.		A		L	
NPT	BSPT	mm	inch.	mm	inch.
9 NL 17x63	9 RL 17x63	25.4	1"	63.5	2.5"
9 NL 17x101	9 RL 17x101	31.7	1.25"	101.6	4"
9 NL 17x140	9 RL 17x140	31.7	1.25"	140	5.5"
9 NL 17x178	9 RL 17x178	31.7	1.25"	178	7"
9 NL 17x216	9 RL 17x216	31.7	1.25"	216	8.5"
9 NL 17x254	9 RL 17x254	31.7	1.25"	254	10"
9 NL 17x292	9 RL 17x292	31.7	1.25"	292	11.5"
9 NL 17x330	9 RL 17x330	31.7	1.25"	330	13"

300 3/8"

Order No / Bestellnr.		A		L	
NPT	BSPT	mm	inch.	mm	inch.
6 NL 17x63	6 RL 17x63	25.4	1"	63.5	2.5"
6 NL 17x101	6 RL 17x101	31.7	1.25"	101.6	4"
6 NL 17x140	6 RL 17x140	31.7	1.25"	140	5.5"
6 NL 17x178	6 RL 17x178	31.7	1.25"	178	7"
6 NL 17x216	6 RL 17x216	31.7	1.25"	216	8.5"
6 NL 17x254	6 RL 17x254	31.7	1.25"	254	10"
6 NL 17x292	6 RL 17x292	31.7	1.25"	292	11.5"
6 NL 17x330	6 RL 17x330	31.7	1.25"	330	13"

200 3/8"

Order No / Bestellnr.		A		L	
NPT	BSPT	mm	inch.	mm	inch.
9 NL 21x63	9 RL 21x63	25.4	1"	63.5	2.5"
9 NL 21x101	9 RL 21x101	31.7	1.25"	101.6	4"
9 NL 21x140	9 RL 21x140	31.7	1.25"	140	5.5"
9 NL 21x178	9 RL 21x178	31.7	1.25"	178	7"
9 NL 21x216	9 RL 21x216	31.7	1.25"	216	8.5"
9 NL 21x254	9 RL 21x254	31.7	1.25"	254	10"
9 NL 21x292	9 RL 21x292	31.7	1.25"	292	11.5"
9 NL 21x330	9 RL 21x330	31.7	1.25"	330	13"

300 1/2"

Order No / Bestellnr.		A		L	
NPT	BSPT	mm	inch.	mm	inch.
16 NL 17x63	16 RL 17x63	28.5	1.25"	63.5	2.5"
16 NL 17x101	16 RL 17x101	35	1.5"	101.6	4"
16 NL 17x140	16 RL 17x140	35	1.5"	140	5.5"
16 NL 17x178	16 RL 17x178	35	1.5"	178	7"
16 NL 17x216	16 RL 17x216	35	1.5"	216	8.5"
16 NL 17x254	16 RL 17x254	35	1.5"	254	10"
16 NL 17x292	16 RL 17x292	35	1.5"	292	11.5"
16 NL 17x330	16 RL 17x330	35	1.5"	330	13"

500 3/8"

Order No / Bestellnr.		A		L	
NPT	BSPT	mm	inch.	mm	inch.
16 NL 21x63	16 RL 21x63	28.5	1.25"	63.5	2.5"
16 NL 21x101	16 RL 21x101	38	1.5"	101.6	4"
16 NL 21x140	16 RL 21x140	38	1.5"	140	5.5"
16 NL 21x178	16 RL 21x178	38	1.5"	178	7"
16 NL 21x216	16 RL 21x216	38	1.5"	216	8.5"
16 NL 21x254	16 RL 21x254	38	1.5"	254	10"
16 NL 21x292	16 RL 21x292	38	1.5"	292	11.5"
16 NL 21x330	16 RL 21x330	38	1.5"	330	13"

500 1/2"

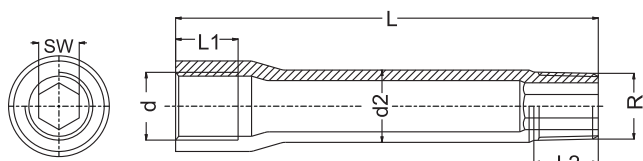
COUPLINGS, MULTICOUPLINGS & MOULD COOLING PRODUCTS

KUPPLUNGEN, MULTIKUPPLUNGEN & KÜHLUNGSELEMENTE FÜR WERKZEUGE

■ SERIE 6,9,16

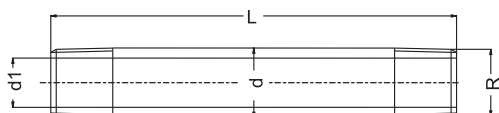


Steel Extension Tube / Verlängerungsrohr aus Stahl



Order No / Bestellnr.		d	R	d2	L	LI	L2	SW
BSP / BSPT	BSP / BSPT							
R 10 BU 50	N 10 BU 50	1/8"	1/8"	10	50	12	10	5
R 10 BU 75	N 10 BU 75	1/8"	1/8"	10	75	12	10	5
R 10 BU 100	N 10 BU 100	1/8"	1/8"	10	100	12	10	5
R 10 BU 125	N 10 BU 125	1/8"	1/8"	10	125	12	10	5
R 13 BU 50	N 13 BU 50	1/4"	1/4"	14	50	12	10	8
R 13 BU 75	N 13 BU 75	1/4"	1/4"	14	75	12	10	8
R 13 BU 100	N 13 BU 100	1/4"	1/4"	14	100	12	10	8
R 13 BU 125	N 13 BU 125	1/4"	1/4"	14	125	12	10	8
R 13 BU 150	N 13 BU 150	1/4"	1/4"	14	150	12	10	8

Extension tube / Verlängerungsrohr



Standard : Steel Zinc Plated - Stahl Verzinkt
Option : Brass Nickel Plated - Messing Vernickelt

Order No / Bestellnr.		R	d	d1	L
BSP / BSPT	BSP / BSPT				
6 BU 50	6 NBU 50	1/8"	10	6	50
6 BU 100	6 NBU 100	1/8"	10	6	100
6 BU 150	6 NBU 150	1/8"	10	6	150
6 BU 200	6 NBU 200	1/8"	10	6	200
6 BU 250	6 NBU 250	1/8"	10	6	250
9 BU 50	9 NBU 50	1/4"	14	9	50
9 BU 100	9 NBU 100	1/4"	14	9	100
9 BU 150	9 NBU 150	1/4"	14	9	150
9 BU 200	9 NBU 200	1/4"	14	9	200
9 BU 250	9 NBU 250	1/4"	14	9	250
12 BU 100	12 NBU 100	3/8"	17	13	100
12 BU 150	12 NBU 150	3/8"	17	13	150
12 BU 200	12 NBU 200	3/8"	17	13	200
12 BU 250	12 NBU 250	3/8"	17	13	250
16 BU 100	16 NBU 100	1/2"	22	16	100
16 BU 150	16 NBU 150	1/2"	22	16	150
16 BU 200	16 NBU 200	1/2"	22	16	200
16 BU 250	16 NBU 250	1/2"	22	16	250

Spare seal/ Ersatz O-Ring (NBR +100°C)



Order No / Bestellnr.	Serie	Temperature
CG 6 N	N 6	
CG 9 N	N 9	-10° / 100° C
CG 16 N	N 16	-4° F / +212° F

Spare seal - Ersatz O-Ring Viton (V)



Order No / Bestellnr.	Serie	Temperature
CG 6 V	N 6	
CG 9 V	N 9	-20° / 200° C
CG 16 V	N 16	-14° F / +392° F

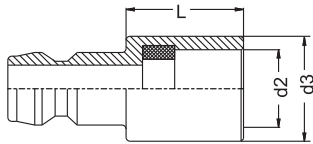
WATER PURGE GUN FROM THE MOULD

LUFTPISTOLE FÜR DAS AUSBLASEN DER FLÜSSIGKEIT AUS DEM WERKZEUG

COUPLINGS, MULTICOUPLINGS & MOULD COOLING PRODUCTS

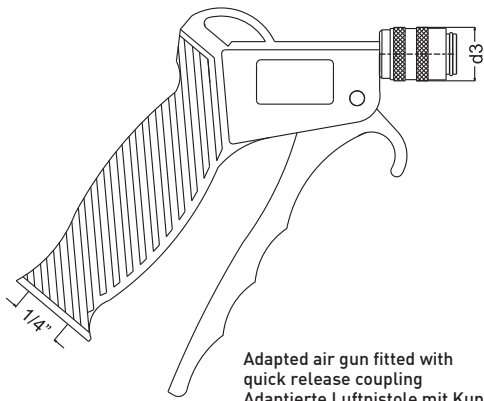
KUPPLUNGEN, MULTIKUPPLUNGEN & KÜHLUNGSELEMENTE FÜR WERKZEUGE

Adapted Plug / Adaptierter Nippel



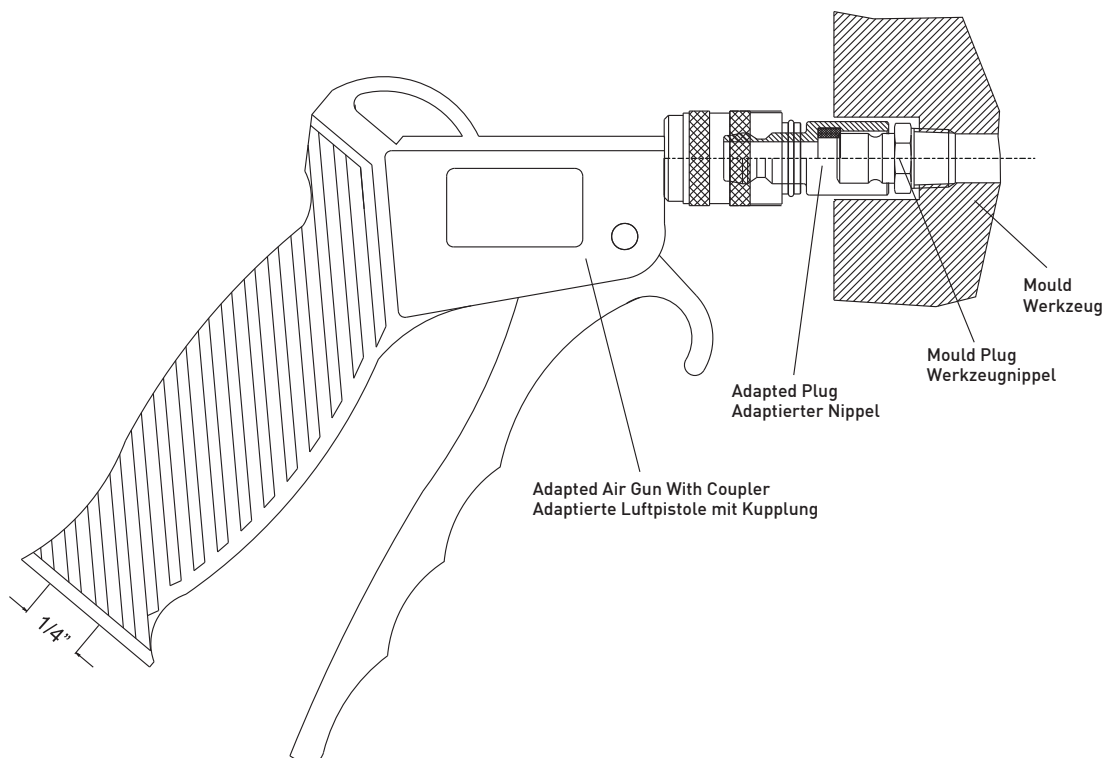
Interchangeable adaptor to suit mould plug
Kompatible Adapter für Werkzeugnippel

Order No / Bestellnr.	d2	d3	L
6 HTU 00	9	14	14.5
9 HTU 00	13	18	20.5



Adapted air gun fitted with quick release coupling
Adaptierte Luftpistole mit Kupplung

Order No / Bestellnr.	d3
TSW00	18



Adapted Air Gun With Coupler
Adaptierte Luftpistole mit Kupplung

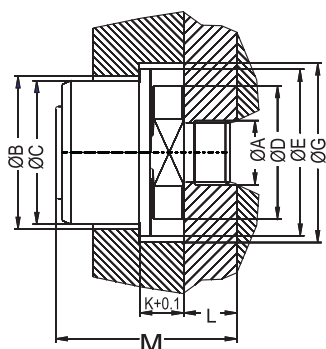
COUPLINGS, MULTICOUPLINGS & MOULD COOLING PRODUCTS

KUPPLUNGEN, MULTIKUPPLUNGEN & KÜHLUNGSELEMENTE FÜR WERKZEUGE

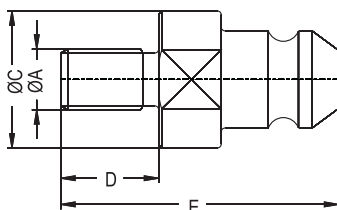
SERIE 300



Couplings / Kupplung



Plugs / Nippel



Connection Anschlüsse	Order No / Bestellnr.	B	C	D	E	G	K	L	M	Pul Force Kg.
M12x1.75	300-01 EGM 12x1.75	34	32	32	39	44	10	15	42.5	1500
M16x1.5	300-01 EGM 16	34	32	32	39	44	10	15	42.5	1500
M16x1.5	300-02 EGM 16	40	38	38	48	53	13	15	52	2400
M16x2.0	300-02 EGM 16x2.0	40	38	38	48	53	13	15	52	2400
M16x1.5	300-03 EGM 16	58	56	52	65	70	17	18	68	3200
M18x1.5	300-03 EGM 18	58	56	52	65	70	17	18	68	3200
M20x1.5	300-03 EGM 20	58	56	52	65	70	17	18	68	3200
M24x1.5	300-03 EGM 24	58	56	52	65	70	17	18	68	3200
M27x1.5	300-03 EGM 27	58	56	52	65	70	17	18	68	3200
M30x1.5	300-03 EGM 30	58	56	52	65	70	17	18	68	3200

M10x1.5	300-01 EUM10x1.5	22.5	20	45.5
M12x1.75	300-01 EUM12x1.75	22.8	20	45.5
M14x2.0	300-01 EUM14x2.0	22.5	20	45.5
M14x2.0	300-01 EUM16x2.0	22.5	20	45.5

M10x1.5	300-02 EUM10x1.5	25.5	20	55
M12x1.75	300-02 EUM12x1.75	25.8	20	55
M14x2.0	300-02 EUM14x2.0	25.5	20	55
M16x2.0	300-02 EUM16x2.0	25.5	20	55

M16x2.0	300-03 EUM16x2.0	35	25	68
M18x2.5	300-03 EUM18x2.5	35	25	68
M20x2.5	300-03 EUM20x2.5	35	25	68
M24x3.0	300-03 EUM24x3.0	35	25	68
M27x3.0	300-03 EUM27x3.0	35	25	68
M30x3.5	300-03 EUM30x3.5	35	25	68

Standard Version / Material - Material

Coupler Body - Kupplungsgrundkörper	: Steel -Stahl
Sleeve - Hülse	: Steel & Hardened - Stahl gehärtet
Springs - Federn	: Steel - Stahl
Balls - Kugeln	: Steel & Hardened - Stahl gehärtet
Male Part	: Steel & Hardned - Stahl gehärtet

Advantages

Mould change time would be reduced It can be used with the existing mould By means of fixed coupling hydraulic return Gain time when changing mould

Vorteile

Verringert Rüstzeiten beim Werkzeugwechsel Kann zu bestehenden Sytemen adaptiert werden

SERIE 059,060,090,190



Interchangeability - Kompatibilität
HASCO, DYROS, EOC, PARADISI (EURO CONNECTOR)

Temperature Range - Temperaturbereich
-20°C +100°C (-40°F +250°F) Nitril (N)
-20°C +200°C (-40°F +390°F) Viton (V)

Working Pressure - Betriebsdruck
0 - 10 bar (0 - 145 PSI) TST 059
0 - 10 bar (0 - 145 PSI) TST 060
0 - 15 bar (0 - 220 PSI) TST 090
0 - 20 bar (0 - 290 PSI) TST 190

Flow capacity - Nennweiten
NW 2.7 TST 059
NW 6 TST 060
NW 9 TST 090
NW 13 TST 190

Standard version - Standardversion
Brass - Messing
Viton (V)

Options - Optionen
K - Chrome plated - Verchromt
N - Nickel plated - Vernickelt
S - Stainless Steel - Edelstahl

For optional orders please add the symbol of your option end of the order no.
Bei Bestellungen Kennbuchstabe bitte hinzufügen (Bestellungen: 090 EG 14-K-N)

Material - Material

Coupler Body- Kupplungsgrundkörper	: Brass - Messing
Sleeve - Hülse	: Brass - Messing
Valve - Ventil	: Brass - Messing
Springs - Federn	: Stainless Steel - Edelstahl
Locking O-Ring- Sprengring	: Stainless Steel - Edelstahl
Balls - Kugeln	: Stainless Steel - Edelstahl
Seals - Dichtungen	: Viton (V)
Plug - Nippel	: Brass - Messing

Using Area:

- On cooling system of plastic zamak, brass and aluminium injection moulds
- On cleaning and washing systems of machines
 - On hot oil - water lines connection
 - All industries
 - On steam line

Anwendungsbereiche:

- An Kühlsysteme für Kunststoff-, Zinkdruckguß, Messing- und Aluminium - Kokillenformen
- Reinigungs- und Waschsyste von Maschinen
 - Temperierung (Wasser/Öl)
 - Alle Industriezweige
 - Dampfleitungen



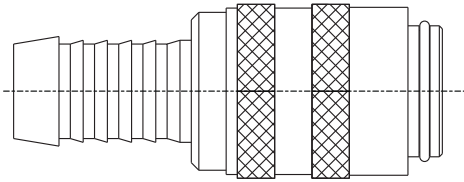
COUPLINGS, MULTICOUPLINGS & MOULD COOLING PRODUCTS

KUPPLUNGEN, MULTIKUPPLUNGEN & KÜHLUNGSELEMENTE FÜR WERKZEUGE

SERIE 059,060,090,190



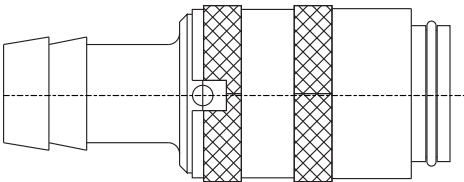
Options - Optionen



Hose Tail Options / Schlauchanschluss Option

For this type hose tail please add the FHG symbol of your option in side of the order no. For example CSK 090 **FHG 13**

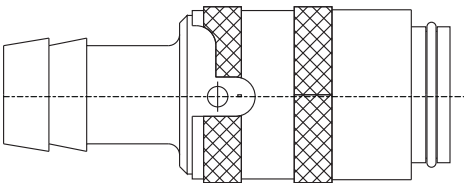
Für diesen Schlauchanschluss fügen Sie FHG zur Artikelnummer hinzu. Z.B. CSK 090 **FHG 13**



E1 Type Safety coupler / S Sicherheitsverriegelung

Please add the symbol E1 add the symbol of your option end of the order no. For example CSK 090 - 13 - E1

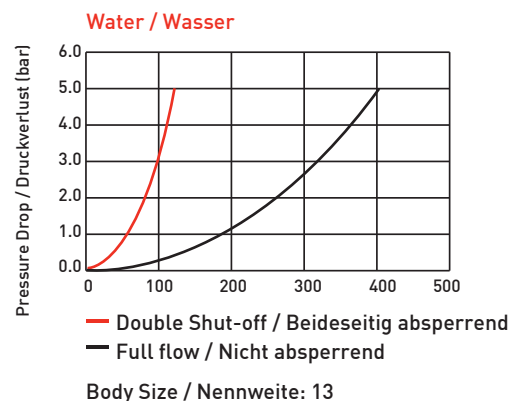
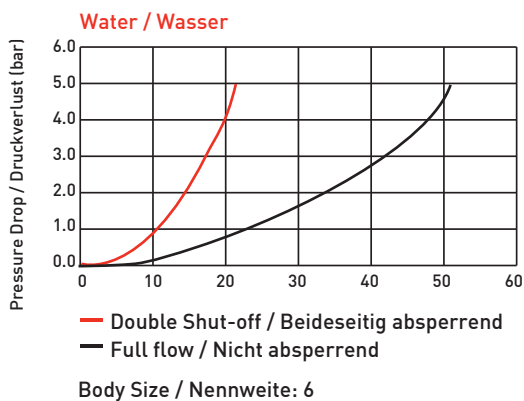
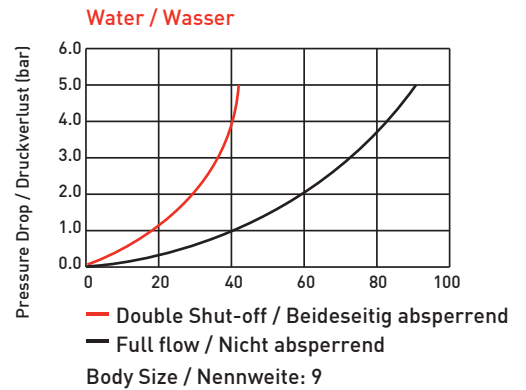
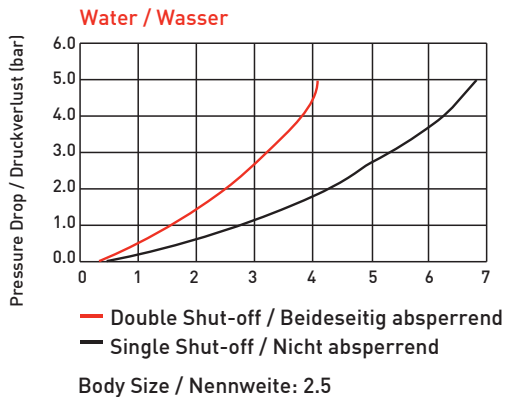
Für diese Option fügen Sie S zur Artikelnummer hinzu. Z.B. CSK 090 **S 13**



E2 Type Safety coupler / SB Sicherheitsverriegelung

Please add the symbol E2 add the symbol of your option end of the order no. For example CSK 090 - 13 - E2

Für diese Option fügen Sie SB zur Artikelnummer hinzu. Z.B. CSK 090 **SB 13**

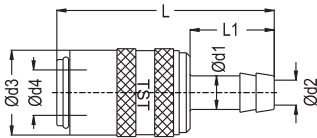




COUPLINGS, MULTICOUPLINGS & MOULD COOLING PRODUCTS

SERIE 059,060,090,190

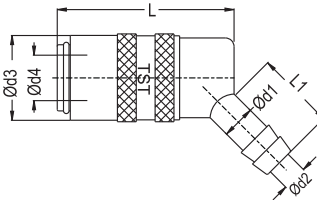
KUPPLUNGEN, MULTIKUPPLUNGEN & KÜHLUNGSELEMENTE FÜR WERKZEUGE



Standard hose tail socket
Kupplung mit gerader Standard - Schlauchtülle



With Valve / Mit Ventil Order No / Bestellnr.	Without Valve / Ohne Ventil Order No / Bestellnr.	Serie	d1	d2	d3	d4	L	LI
CSK 059 - 05	SK 059 - 05	2.7	5 - 3/16"	2.7	10	5	35	13.5
CSK 060 - 06	SK 060 - 06	6	6 - 1/4"	4.5	17	9	46	17
CSK 060 - 08	SK 060 - 08	6	8 - 5/16"	6	17	9	46	17
CSK 060 - 09	SK 060 - 09	6	9 - 5/14"	6	17	9	46	17
CSK 060 - 10	SK 060 - 10	6	10 - 3/8"	6	17	9	46	17
CSK 060 - 13	SK 060 - 13	6	13 - 1/2"	6	17	9	52	23
CSK 090 - 10	SK 090 - 10	9	10 - 3/8"	8	23	13	60	23
CSK 090 - 13	SK 090 - 13	9	13 - 1/2"	10	23	13	60	23
CSK 190 - 19	SK 190 - 19	13	19 - 3/4"	13	31	19	90	32



Standard hose tail socket 45°
Kupplung mit 45°
Standard - Schlauchtülle

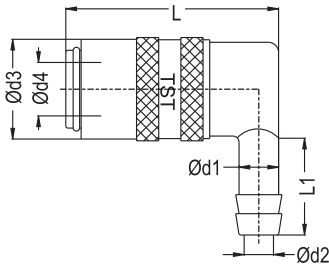


With Valve / Mit Ventil Order No / Bestellnr.	Without Valve / Ohne Ventil Order No / Bestellnr.	Serie	d1	d2	d3	d4	L	LI
CSK 059 - 05 - 45°	SK 059 - 05 - 45°	2.7	5 - 3/16"	2.7	10	5	29.5	13.5
CSK 060 - 06 - 45°	SK 060 - 06 - 45°	6	6 - 1/4"	4.5	17	9	41	17
CSK 060 - 08 - 45°	SK 060 - 08 - 45°	6	8 - 5/16"	6	17	9	41	17
CSK 060 - 09 - 45°	SK 060 - 09 - 45°	6	9 - 5/14"	6	17	9	41	17
CSK 060 - 10 - 45°	SK 060 - 10 - 45°	6	10 - 3/8"	6	17	9	41	17
CSK 090 - 10 - 45°	SK 090 - 10 - 45°	9	10 - 3/8"	8	23	13	51	23
CSK 090 - 13 - 45°	SK 090 - 13 - 45°	9	13 - 1/2"	9	23	13	51	23
CSK 190 - 19 - 45°	SK 190 - 19 - 45°	13	19 - 3/4"	13	31	19	78	32

COUPLINGS, MULTICOUPLINGS & MOULD COOLING PRODUCTS

KUPPLUNGEN, MULTIKUPPLUNGEN & KÜHLUNGSELEMENTE FÜR WERKZEUGE

SERIE 059,060,090,190



Standard hose tail socket 90°
Kupplung mit 90°
Standard - Schlauchtülle

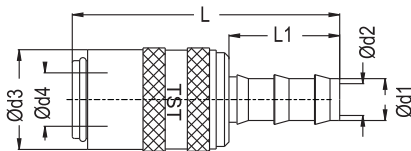


With Valve / Mit Ventil
Order No / Bestellnr.



Without Valve / Ohne Ventil
Order No / Bestellnr.

With Valve / Mit Ventil Order No / Bestellnr.	Without Valve / Ohne Ventil Order No / Bestellnr.	NW	d1	d2	d3	d4	L	LI
CSK 059 - 05 - 90°	SK 059 - 05 - 90°	2.7	5 - 3/16"	2.7	10	5	29.5	13.5
CSK 060 - 06 - 90°	SK 060 - 06 - 90°	6	6 - 1/4"	4.5	17	9	41	17
CSK 060 - 08 - 90°	SK 060 - 08 - 90°	6	8 - 5/16"	6	17	9	41	17
CSK 060 - 09 - 90°	SK 060 - 09 - 90°	6	9 - 5/14"	6	17	9	41	17
CSK 060 - 10 - 90°	SK 060 - 10 - 90°	6	10 - 3/8"	6	17	9	41	17
CSK 090 - 10 - 90°	SK 090 - 10 - 90°	9	10 - 3/8"	8	23	13	51	23
CSK 090 - 13 - 90°	SK 090 - 13 - 90°	9	13 - 1/2"	9	23	13	51	23
CSK 190 - 19 - 90°	SK 190 - 19 - 90°	13	19 - 3/4"	13	31	19	78	32



Push-Lock hose tail socket
Kupplung mit gerader
Schnellsteck - Schlauchtülle

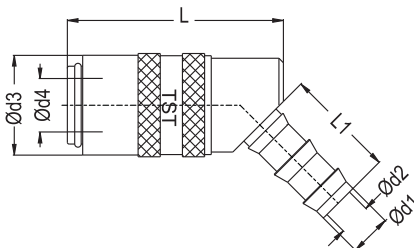


With Valve / Mit Ventil
Order No / Bestellnr.



Without Valve / Ohne Ventil
Order No / Bestellnr.

With Valve / Mit Ventil Order No / Bestellnr.	Without Valve / Ohne Ventil Order No / Bestellnr.	NW	d1	d2	d3	d4	L	LI
CSK 060 - FG 06	SK 060 - FG 06	6	6 - 1/4"	5	17	9	52	24
CSK 060 - FG 10	SK 060 - FG 10	6	10 - 3/8"	7	17	9	52	24
CSK 090 - FG 10	SK 090 - FG 10	9	10 - 3/8"	8	23	13	64	28
CSK 090 - FG 13	SK 090 - FG 13	9	13 - 1/2"	10	23	13	64	28
CSK 190 - FG 19	SK 190 - FG 19	13	19 - 3/4"	13	31	19	96	38



Push-Lock hose tail socket 45°
Kupplung mit 45°
Schnellsteck - Schlauchtülle



With Valve / Mit Ventil
Order No / Bestellnr.



Without Valve / Ohne Ventil
Order No / Bestellnr.

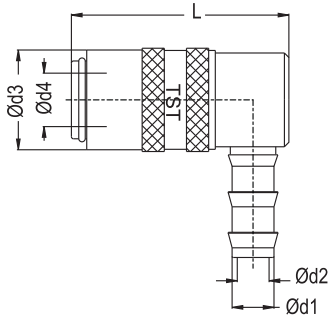
With Valve / Mit Ventil Order No / Bestellnr.	Without Valve / Ohne Ventil Order No / Bestellnr.	NW	d1	d2	d3	d4	L	LI
CSK 060 - FG 06 - 45°	SK 060 - FG 06 - 45°	6	6 - 1/4"	5	17	9	48	24
CSK 060 - FG 10 - 45°	SK 060 - FG 10 - 45°	6	10 - 3/8"	7	17	9	48	24
CSK 090 - FG 10 - 45°	SK 090 - FG 10 - 45°	9	10 - 3/8"	8	23	13	55	28
CSK 090 - FG 13 - 45°	SK 090 - FG 13 - 45°	9	13 - 1/2"	10	23	13	55	28
CSK 190 - FG 19 - 45°	SK 190 - FG 19 - 45°	13	19 - 3/4"	13	31	19	84	38



COUPLINGS, MULTICOUPLINGS & MOULD COOLING PRODUCTS

SERIE 059,060,090,190

KUPPLUNGEN, MULTIKUPPLUNGEN & KÜHLUNGSELEMENTE FÜR WERKZEUGE



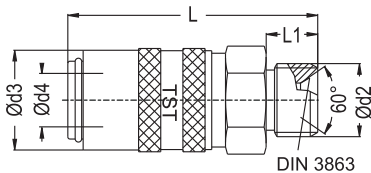
Push-Lock hose tail socket 90°
Kupplung mit 90°
Schnellsteck - Schlauchtülle



With Valve / Mit Ventil
Order No / Bestellnr.

Without Valve / Ohne Ventil
Order No / Bestellnr.

With Valve / Mit Ventil Order No / Bestellnr.	Without Valve / Ohne Ventil Order No / Bestellnr.	NW	d1	d2	d3	d4	L	LI
CSK 060 - FG 06 - 90°	SK 060 - FG 06 - 90°	6	6 - 1/4"	5	17	9	48	24
CSK 060 - FG 10 - 90°	SK 060 - FG 10 - 90°	6	10 - 3/8"	7	17	9	47	24
CSK 090 - FG 10 - 90°	SK 090 - FG 10 - 90°	9	10 - 3/8"	8	23	13	55	28
CSK 090 - FG 13 - 90°	SK 090 - FG 13 - 90°	9	13 - 1/2"	10	23	13	55	28
CSK 190 - FG 19 - 90°	SK 190 - FG 19 - 90°	13	19 - 3/4"	13	31	19	84	38



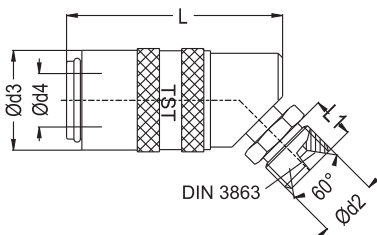
Cylindrical Male Thread socket
Kupplung mit Aussengewinde zylindrisch



With Valve / Mit Ventil
Order No / Bestellnr.

Without Valve / Ohne Ventil
Order No / Bestellnr.

With Valve / Mit Ventil Order No / Bestellnr.	Without Valve / Ohne Ventil Order No / Bestellnr.	NW	d2	d3	d4	L	LI	SW
CSK 060 - EGM 10	SK 060 - EGM 10	6	M10x1.0	17	9	48	9	17
CSK 060 - EG 13	SK 060 - EG 13	6	BSP 1/4"	17	9	48	9	17
CSK 060 - EGM 14	SK 060 - EGM 14	6	M14x1.5	17	9	48	9	17
CSK 060 - EG 17	SK 060 - EG 17	6	BSP 3/8"	17	9	48	9	17
CSK 090 - EGM 16	SK 090 - EGM 16	9	M16x1.5	23	13	52	9	21
CSK 090 - EG 17	SK 090 - EG 17	9	BSP 3/8"	23	13	52	9	21
CSK 090 - EG 21	SK 090 - EG 21	9	BSP 1/2"	23	13	52	9	21
CSK 190 - EG 21	SK 190 - EG 21	13	BSP 1/2"	31	19	74	12	30
CSK 190 - EGM 24	SK 190 - EGM 24	13	M24x1.5	31	19	78	16	30



Cylindrical Male Thread socket 45°
Kupplung mit 45° Aussengewinde zylindrisch



With Valve / Mit Ventil
Order No / Bestellnr.

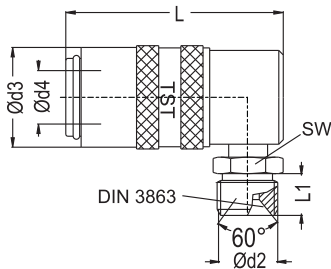
Without Valve / Ohne Ventil
Order No / Bestellnr.

With Valve / Mit Ventil Order No / Bestellnr.	Without Valve / Ohne Ventil Order No / Bestellnr.	NW	d2	d3	d4	L	LI	SW
CSK 060 - EG 13 - 45°	SK 060 - EG 13 - 45°	6	BSP 1/4"	17	9	48	9	17
CSK 060 - EGM 14 - 45°	SK 060 - EGM 14 - 45°	6	M14x1.5	17	9	48	9	17
CSK 060 - EG 17 - 45°	SK 060 - EG 17 - 45°	6	BSP 3/8"	17	9	48	9	17
CSK 090 - EG 17 - 45°	SK 090 - EG 17 - 45°	9	BSP 3/8"	23	13	55	12	21
CSK 090 - EGM 16 - 45°	SK 090 - EGM 16 - 45°	9	M16x1.5	23	13	55	12	21
CSK 090 - EG 21 - 45°	SK 090 - EG 21 - 45°	9	BSP 1/2"	23	13	55	12	21
CSK 190 - EG 21 - 45°	SK 190 - EG 21 - 45°	13	BSP 1/2"	31	19	76	14	30
CSK 190 - EGM 24 - 45°	SK 190 - EGM 24 - 45°	13	M24x1.5	31	19	78	16	30

COUPLINGS, MULTICOUPLINGS & MOULD COOLING PRODUCTS

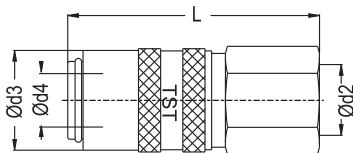
KUPPLUNGEN, MULTIKUPPLUNGEN & KÜHLUNGSELEMENTE FÜR WERKZEUGE

SERIE 059,060,090,190



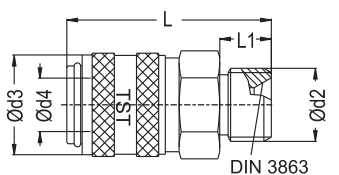
Cylindrical Male Thread socket 90°
Kupplung mit 90° Aussengewinde zylindrisch

With Valve / Mit Ventil Order No / Bestellnr.	Without Valve / Ohne Ventil Order No / Bestellnr.	NW	d2	d3	d4	L	LI	SW
CSK 060 - EG 13 - 90°	SK 060 - EG 13 - 90°	6	BSP 1/4"	17	9	48	11	17
CSK 060 - EGM 14 - 90°	SK 060 - EGM 14 - 90°	6	M14x1.5	17	9	48	11	17
CSK 060 - EG 17 - 90°	SK 060 - EG 17 - 90°	6	BSP 3/8"	17	9	48	11	17
CSK 090 - EG 17 - 90°	SK 090 - EG 17 - 90°	9	BSP 3/8"	23	13	52	11	21
CSK 090 - EGM 16 - 90°	SK 090 - EGM 16 - 90°	9	M16x1.5	23	13	52	11	21
CSK 090 - EG 21 - 90°	SK 090 - EG 21 - 90°	9	BSP 1/2"	23	13	52	11	21
CSK 190 - EG 21 - 90°	SK 190 - EG 21 - 90°	13	BSP 1/2"	31	19	76	14	30
CSK 190 - EGM 24 - 90°	SK 190 - EGM 24 - 90°	13	M24x1.5	31	19	78	16	30



Female Thread socket
Kupplung mit Innengewinde

With Valve / Mit Ventil Order No / Bestellnr.	Without Valve / Ohne Ventil Order No / Bestellnr.	NW	d2	d3	d4	L	LI	SW
CSK 060 - DGM 10	SK 060 - DGM 10	6	M10x1.0	17	9	44	9	17
CSK 060 - DG 13	SK 060 - DG 13	6	BSP 1/4"	17	9	44	11	17
CSK 060 - DGM 14	SK 060 - DGM 14	6	M14x1.5	17	9	44	11	17
CSK 060 - DG 17	SK 060 - DG 17	6	BSP 3/8"	17	9	44	11	17
CSK 090 - DGM 16	SK 090 - DGM 16	9	M16x1.5	23	13	48	11	21
CSK 090 - DG 17	SK 090 - DG 17	9	BSP 3/8"	23	13	48	11	21
CSK 090 - DG 21	SK 090 - DG 21	9	BSP 1/2"	23	13	48	11	21
CSK 190 - DG 21	SK 190 - DG 21	13	BSP 1/2"	31	19	70	14	30
CSK 190 - DGM 24	SK 190 - DGM 24	13	M24x1.5	31	19	72	16	30
CSK 190 - DG 26	SK 190 - DG 26	13	BSP 3/4"	31	19	72	16	30



Cylindrical Male Thread socket (Short type)
Kupplung mit Aussengewinde zylindrisch
(kurze Version)

With Valve / Mit Ventil Order No / Bestellnr.	NW	d2	d3	d4	L	LI	SW
060 - EG 13	6	BSP 1/4"	18	9	38	9	17
090 - EG 17	9	BSP 3/8"	23	13	38	9	21



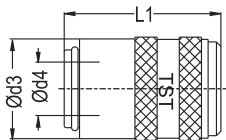
COUPLINGS, MULTICOUPLINGS & MOULD COOLING PRODUCTS

SERIE 059,060,090,190

KUPPLUNGEN, MULTIKUPPLUNGEN & KÜHLUNGSELEMENTE FÜR WERKZEUGE

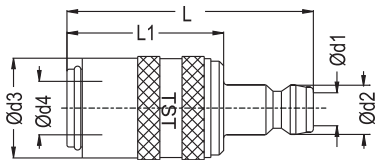


Blind Socket / Blindkupplung



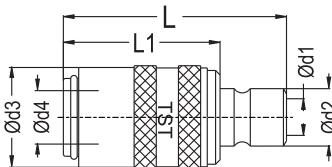
Order No / Bestellnr.	NW	d3	d4	LI
060 KTG 00	6	13	9	31,5
090 KTG 00	9	23	13,6	35,8

Adapting Socket with 060 - 090 Plugs
Adapterkupplung mit Nippel



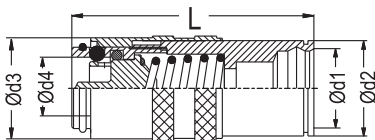
With Valve / Mit Ventil Order No / Bestellnr.	Without Valve / Ohne Ventil Order No / Bestellnr.	NW	d1	d2	d3	d4	L	LI
CSK 060 AU 090	SK 060 AU 090	6	9	13	18	9	58.5	44
CSK 090 AU 060	SK 090 AU 060	9	6	9	23	13	57.5	45

Adapting Socket With 6 - 9 Plugs
Adapterkupplung mit Nippel



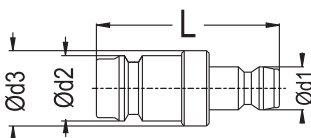
With Valve / Mit Ventil Order No / Bestellnr.	Without Valve / Ohne Ventil Order No / Bestellnr.	NW	d1	d2	d3	d4	L	LI
CSK 060 AU 06	SK 060 AU 06	6	6	9	18	9	56	44
CSK 090 AU 09	SK 090 AU 09	9	9	13	23	13	60	45

Adapting Socket with 100.08 Plug
Adapterkupplung mit Buchse



With Valve / Mit Ventil Order No / Bestellnr.	Without Valve / Ohne Ventil Order No / Bestellnr.	NW	d1	d2	d3	d4	L
CSK 060 AU 100.08	SK 060 AU 100.08	6	17	21	18	9	56
CSK 090 AU 100.08	SK 090 AU 100.08	9	17	21	23	13	60

Adapting Plug 060 - 090
Adaptornippel 060 - 090



Order No / Bestellnr.	NW	d3	d4	LI
060 HEF 090	9	13	14	32
060 HEF 00	9	9	11	34
090 HEF 00	13	13	14	40

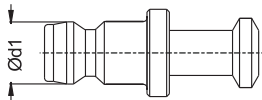
COUPLINGS, MULTICOUPLINGS & MOULD COOLING PRODUCTS

KUPPLUNGEN, MULTIKUPPLUNGEN & KÜHLUNGSELEMENTE FÜR WERKZEUGE

SERIE 059,060,090,190



Stop Plug / Blindnippel



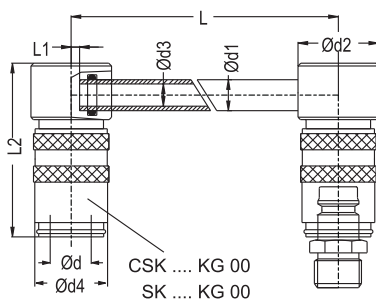
Order No / Bestellnr.

dI

059 KTU 00
060 KTU 00
090 KTU 00
190 KTU 00

5
9
13
19

Diverting Socket / Umlenkkupplungen



With Valve / Mit Ventil
Order No / Bestellnr.

Without Valve / Ohne Ventil
Order No / Bestellnr.

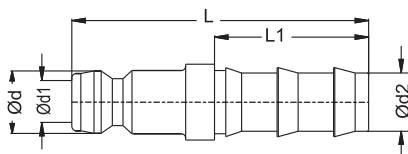
CSK 060 - KG 125
CSK 060 - KG 250
CSK 060 - KG 500
CSK 090 - KG 125
CSK 090 - KG 250
CSK 090 - KG 500
CSK 190 - KG 160
CSK 190 - KG 315
CSK 190 - KG 500

SK 060 - KG 125
SK 060 - KG 250
SK 060 - KG 500
SK 090 - KG 125
SK 090 - KG 250
SK 090 - KG 500
SK 190 - KG 160
SK 190 - KG 315
SK 190 - KG 500

d	dI	d2	d3	d4	t	h	L	LI	L2
9	8	20	6	17	18	29	125	0	44
9	8	20	6	17	18	29	250	0	44
9	8	20	6	17	18	29	500	0	44
13	10	26	8	23	18	39	125	2	53
13	10	26	8	23	18	39	250	2	53
13	10	26	8	23	18	39	500	2	53
19	14	36	12	31	36	54	160	3	80
19	14	36	12	31	36	54	315	3	80
19	14	36	12	31	36	54	500	3	80

"Not released for sale in Germany"
"Verkauf in Deutschland ausgeschlossen"

Push-Lock Hose Plug
Stecknippel mit Schnellsteck - Schlauchtülle



Order No / Bestellnr.

NW

d2

d4

L

060 FU 10
060 FU 13
090 FU 10
090 FU 13
190 FU 13
190 FU 19

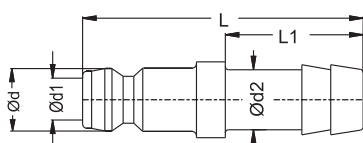
6
6
9
9
13
13

10 - 3/8"
13 - 1/2"
10 - 3/8"
13 - 1/2"
13 - 1/2"
19 - 3/4"

41
45
41
45
60
70

24
24
24
28
28
38

Standard Hose Plug
Standard Schlauchtülle



Order No / Bestellnr.

NW

d2

d4

L

059 HU 05
060 HU 06
060 HU 08
060 HU 09
060 HU 10
060 HU 13
090 HU 10
090 HU 13
190 HU 13
190 HU 19

5
6
6
6
6
6
9
9
13
13

5
6 - 1/4"
8 - 5/16"
9 - 5/14"
10 - 3/8"
13 - 1/2"
10 - 3/8"
13 - 1/2"
13 - 1/2"
19 - 3/4"

25
37
37
37
37
37
39
39
53
62

13.5
17
17
17
17
17
23
23
23
27